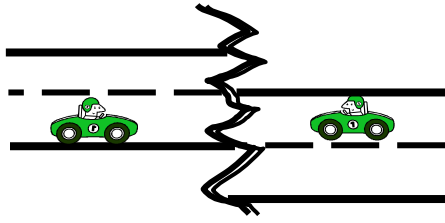


Cal Club SCCA and SMSCC present



# Not My Fault

## Saturday, August 1, 2015

### What?

An SCCA Regional Time-Speed-Distance Tour rally written by Joanna Weissen. This year's rally focuses on the Oak Ridge earthquake fault, which roughly parallels State Route 126. Joanna says that this year she will have you running around in circles! The rally will end in Ventura.

### Where?

Start is behind the Bank of America and the Post Office at Sepulveda and Devonshire in Mission Hills near I-405 and CA-118 freeways (the usual FFN start, for SMSCC regulars).

### When?

Saturday, August 1, 2015. Registration opens at 9:00 am, first car out at 10:01 am. Beginner orientation at 9:30 am. Rally will take about 5 hours to finish.

### How Much?

\$45 at the Start. **DISCOUNTS AVAILABLE:**  
\$10 off if we receive your entry and payment by July 29.  
\$ 5 off if both Driver and Navigator are SCCA members

### Important!

Minors: For a minor to participate, *both* parents must sign the SCCA Minor Waiver. Each parent's signature is *only* valid if the parent signs in the presence of the rally registrar (any SMSCC member), or the parent's signature is notarized. You can download the minor waiver from:

<http://www.scca.com/downloads/3222-minor-release-and-waiver/download>  
or link to it from [www.smscc.org](http://www.smscc.org)

### Want more information?

Contact Jeanne English at 310-372-7168 or email [ean21@juno.com](mailto:ean21@juno.com).  
Also see [www.smscc.org](http://www.smscc.org). This flyer on the web: [nmf.smscc.org](http://nmf.smscc.org). (soon)

To enter, send this form to Jeanne English (Registrar) at 30 13th Street, #E, Hermosa Beach, CA 90254.  
Make checks payable to SMSCC. *Get it in by July 29, 2015, and save \$10!*

Driver: \_\_\_\_\_

Navigator: \_\_\_\_\_

Address: \_\_\_\_\_

Address: \_\_\_\_\_

City/St/Zip: \_\_\_\_\_ / \_\_\_\_\_ / \_\_\_\_\_

City/St/Zip: \_\_\_\_\_ / \_\_\_\_\_ / \_\_\_\_\_

Phone (cell preferred): \_\_\_\_\_

Phone (cell preferred): \_\_\_\_\_

Club: \_\_\_\_\_ SCCA Member? Yes No

Club: \_\_\_\_\_ SCCA Member? Yes No

Email: \_\_\_\_\_

Email: \_\_\_\_\_

Car: color, make, model \_\_\_\_\_

CLASS (circle one):    A – (Equipped)    B – (Navigational)    C – (Limited Equipment)    D – (Beginner)