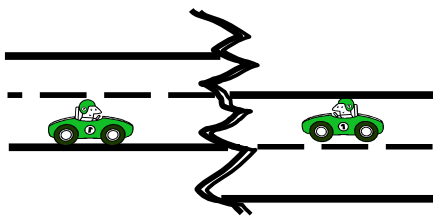


Cal Club SCCA and SMSCC present



Not My Fault

Saturday, August 9, 2014

- What?** An SCCA Regional Time-Speed-Distance Tour rally written by Joanna Weissen. The rally features the fun roads and stunning views along the Malibu Fault and in the Santa Monica mountains. The rally starts in Los Angeles County and travels into Ventura County to the finish, likely in Oxnard.
- Where?** Start is behind the Bank of America and the Post Office at Sepulveda and Devonshire in Mission Hills near I-405 and CA-118 freeways (the usual FFN start, for SMSCC regulars).
- When?** Saturday, August 9, 2014. Registration opens at 9:00 am, first car out at 10:01 am. Beginner orientation at 9:30 am. Rally will be about 5 hours.
- How Much?** \$45 at the Start. **DISCOUNTS AVAILABLE:**
 \$10 off if we receive your entry and payment by June 12th.
 \$ 5 off if both Driver and Navigator are SCCA members
- Important!** Minors: For a minor to participate, *both* parents must sign the SCCA Minor Waiver. Each parent's signature is *only* valid if the parent signs in the presence of the rally registrar (any SMSCC member), or the parent's signature is notarized. You can download the minor waiver from:
<http://www.scca.com/documents/insurance/SCCAminorwaiver.pdf>
 or link to it from www.smscc.org
- Want more information?** Contact Jeanne English at 310-372-7168 or email ean21@juno.com. Also see www.smscc.org. This flyer on the web: nmf.smscc.org.

To enter, send this form to Jeanne English (Registrar) at 30 13th Street, #E, Hermosa Beach, CA 90254. Make checks payable to SMSCC. *Get it in by August 6, 2014, and save \$10!*

Driver: _____ Navigator: _____

Address: _____ Address: _____

City/St/Zip: _____/_____/_____ City/St/Zip: _____/_____/_____

Phone (cell preferred): _____ Phone (cell preferred): _____

Club: _____ SCCA Member? Yes No Club: _____ SCCA Member? Yes No

Email: _____ Email: _____

CLASS (circle one): A – (Equipped) B – (Navigational) C – (Limited Equipment) D – (Beginner)